

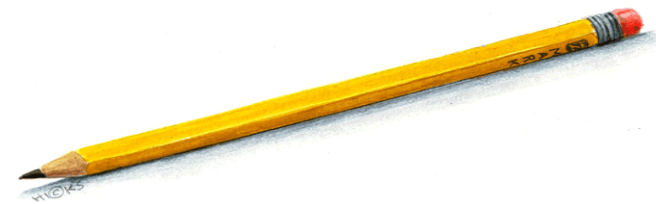


Moving Forward with the New Illinois Learning Standards Incorporating the Common Core



Focus on Four Areas

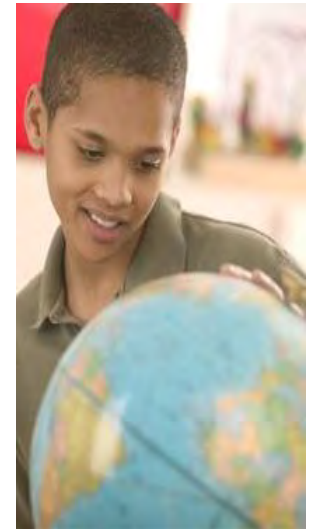
- Support for Lowest Performing Schools
- Longitudinal Data System
- Effective Teachers and Leaders
- Standards and Assessment



Increasing Student Achievement in Low Performing Schools



- School Improvement Grants
- Statewide System of Support
- State Intervention



Longitudinal Data System

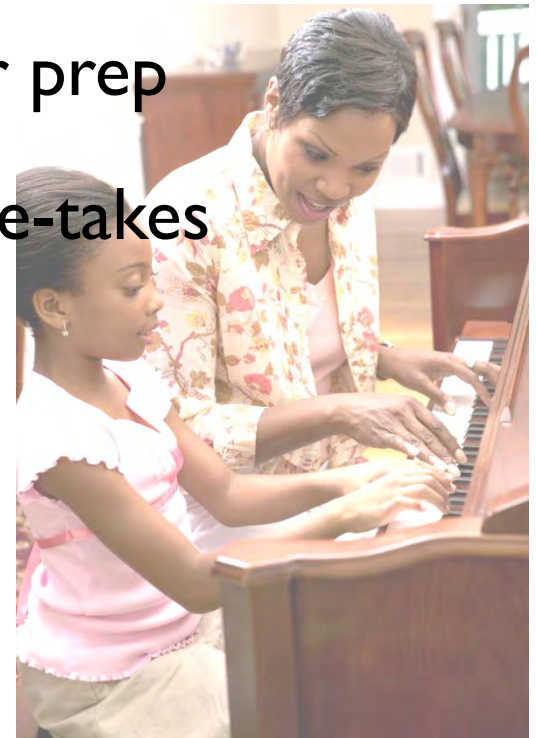
- Establish a statewide transcript system for middle and high school.
- Integrate student level data with administrator data.



- Expand connection to postsecondary and ultimately to careers.
- Expand data collection to early childhood.

Supporting Great Teachers & Leaders

- Performance Evaluation Reform Act 2010
- Performance Evaluation Advisory Committee
- Redesign principal prep/teacher prep
- Higher cut scores and limited re-takes



Standards & Assessment

A Year in Review:

New ELA and Math Standards

Governing State for PARCC

What did Phase I look like at the **local level**?



Adoption

Communication

Awareness

- Ongoing communication/updates
- A close look at current curriculum
- Teachers **engaged** and a part of planning discussions
- Identification of **priority areas** for support – school level and district level

How will the Common Core State Standards be Implemented?

Phase I: Awareness, Communication and Planning.

Phase II: Design of Implementation System, Communication, and Resource design

Phase III: Transition, Implementation, and Technical Assistance.

A new statewide assessment system will be in place for the 2014(fall) – 2015 (spring) school year.



What We Know:



ISAT and PSAE will be used until 2014.



It is anticipated that pilot items will be incorporated into ISAT beginning 2012.



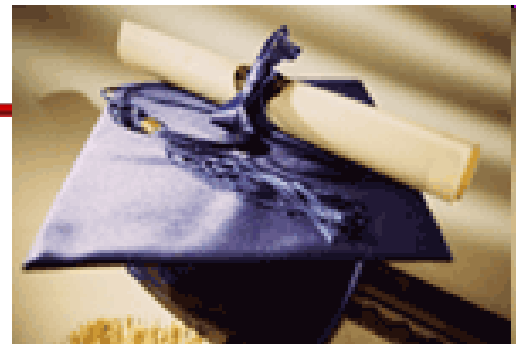
As the timeline progresses, schools/districts will need to make strategic decisions about balancing instruction between common core and the 97 learning standards.

What is PARCC?

The **Partnership for the Assessment of Readiness for College and Careers** (PARCC) was awarded funding for the development of a K-12 assessment system aligned to the Common Core State Standards in English language arts and mathematics.



The goal of PARCC is to create an assessment system that will help states dramatically increase the number of students who graduate high school ready for college and careers and provide students, parents, teachers and policymakers with the tools they need to help students – from grade three through high school – stay on track and graduate prepared.



What will the new assessment look like?

- Assessments will be **computer based**.
- **Performance** tasks will be included.
- PARCC assessment must be used for **accountability, comparability and evaluations**.
- Assessments will provide **timely feedback** to inform instruction.



What We Know:

- This is about **changing instruction.**
- Teaching and assessing will look different.
- We have to **raise expectations** for all kids.



What We Know:

- Common Core should be fully implemented in SY2013-14
- New standards for Science and Social Studies are underway
- Resources will be developed in collaboration with other states and PARCC
- ROEs/ISCs will be supporting roll out of statewide professional development



What We **Don't** Know (at least not yet)



- How will the new assessment be used for school accountability and the evaluation of teacher/principal effectiveness?
- How will the new assessments accommodate English Language learners or students with disabilities?
- How will ESEA reauthorization define growth? multiple measures?



Anticipated Outcome:

By the end of the 2011-2012 school year, every district should have a transition plan in place that includes:

- review of curriculum and plan for any changes;
- a plan to address instructional needs;
- a needs assessment based on local analysis;
- a professional development plan addressing the needs of staff;
- alignment to current school improvement efforts; and
- identification of anticipated support based on data and teacher input.



What is underway?

Collaborative Efforts

- **Teacher Teams**
- **Standards Based Committee**
- **Student Standards Work Group**
- **Collaborating with associations to coordinate Professional Development**
- **PTA**
- **Ongoing planning with IBHE/ICCB**

Illinois Math Project

- Train the Trainers Model
- Available in the Fall
- Teacher Team for Math will review and revise late summer
- Training will be coordinated with ROEs/ISCs



When you are dissatisfied and would like to go back to your youth, think of Algebra.

What resources will be available?



summer

- **Content Frameworks** aligned to common core; Publisher Criteria for ELA
- Exemplars of texts and writing (in addition to the appendices)
- Rubrics for text complexity and writing
- A **scope and sequence** of the standards that provides guidance on how to chunk key topics quarterly, for each grade
- Math Progressions Project will publish complete progression document ****AVAILABLE IN DRAFT FORM**

Illustrative Mathematics Project

<http://math.arizona.edu/~ime/index.html>



Progressions Documents for Math Standards

The Common Core State Standards in mathematics were built on progressions: narrative documents describing the progression of a topic across a number of grade levels, informed both by research on children's cognitive development and by the logical structure of mathematics.

[Draft K–5 Progression on Number and Operations in Base Ten](#)

[Draft K–2 Progression on Counting and Cardinality and Operations and Algebraic Thinking](#)

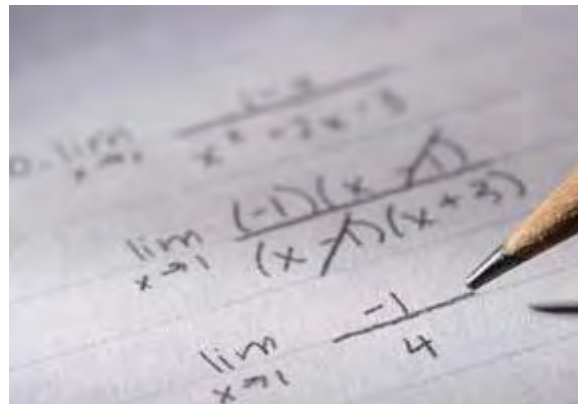
[Draft 6–8 Progression on Expressions and Equations](#)

Resources

A Common Core State Standards mathematics curriculum analysis tool.

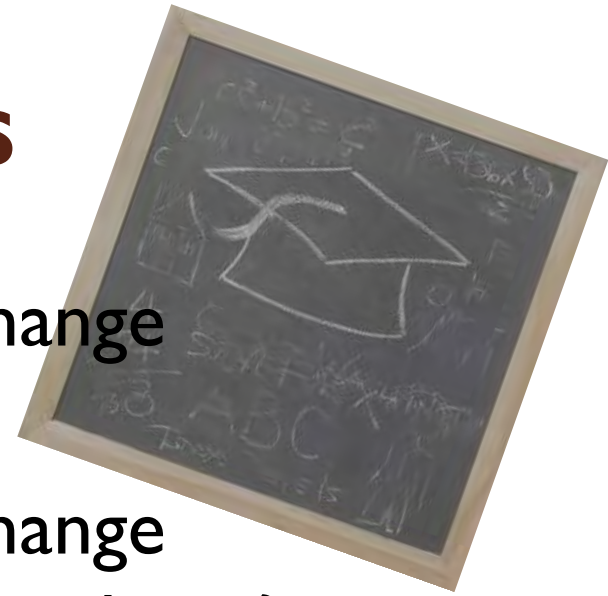
This tool is comprised of a review framework for states or districts to use to guide local decision-making in selecting curriculum resources and textbooks. Dr. Bush has also created a PowerPoint to offer professional development to those who wish to use the analysis tool.

- o CCSSM Curriculum Analysis Tool - <http://goo.gl/m6kli>
- o Professional Development PowerPoint - <http://goo.gl/4Vhkl>



Guiding Questions

- How will the common core change instruction for teachers?
- How will the common core change *learning* expectations for our Students?
- What are the Implications of the standards in the classrooms?
- What student support will be needed?
- What is your approach to review curriculum and develop revisions?





Thank You