

An UPDATED powerpoint is now available from PARCC highlighting the refined assessment design. The information below is excerpted directly from the powerpoint. New PowerPoint slides on PARCC are available on the PARCC website at <http://www.parcconline.org/about-parcc>.

#### PARCC GOALS:

1. Create high-quality assessments
2. Build a pathway to college and career readiness for **all** students
3. Support educators in the classroom
4. Develop 21<sup>st</sup> century, technology-based assessments
5. Advance accountability at all levels

To address these priority purposes, PARCC will develop an assessment system comprised of **four components**. Each component will be computer-delivered and will leverage technology to incorporate innovations.

1. Two **summative assessment components** designed to
  1. Make “college and career readiness” and “on-track” determinations
  2. Measure the full range of standards and full performance continuum
  3. Provide data for accountability uses, including measures of growth
2. Two **interim assessment components** designed to
  1. Generate *timely* information for informing instruction, interventions, and professional development during the school year
  2. In ELA/literacy, a *third* formative component will assess students’ speaking and listening skills

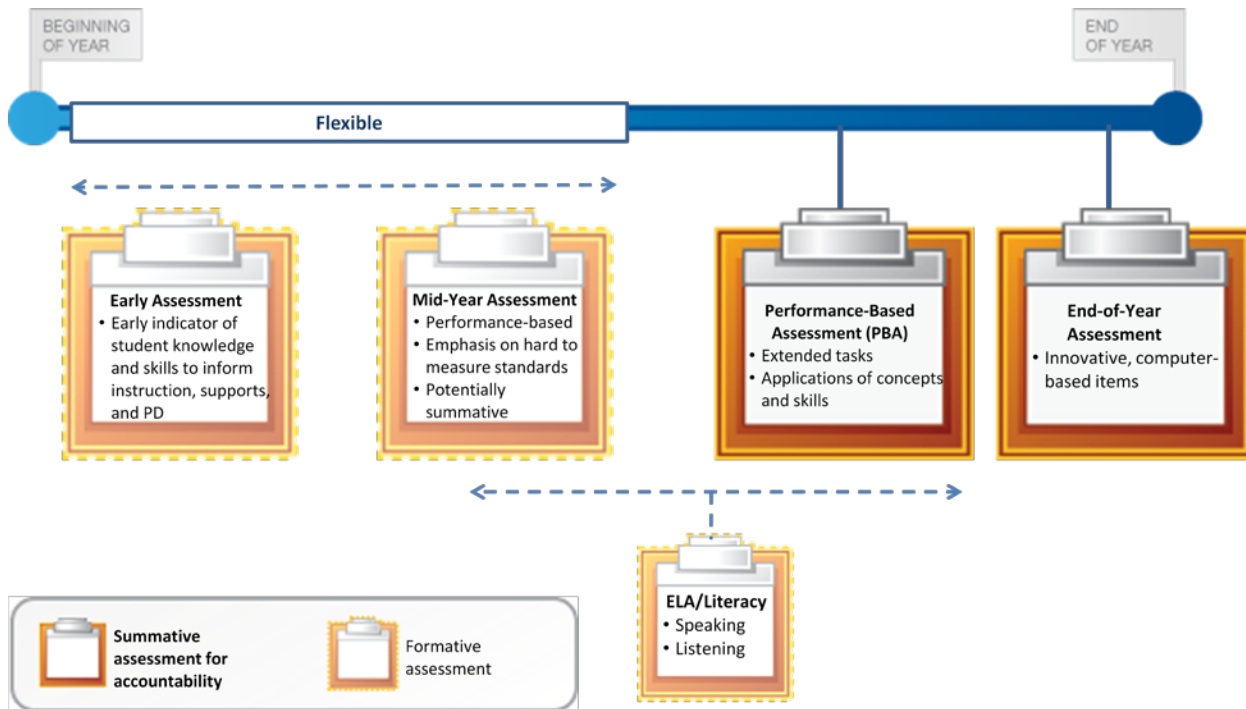
#### Summative Assessment Components:

- **Performance-Based Assessment (PBA)** administered as close to the end of the school year as possible. The ELA/literacy PBA will focus on writing effectively when analyzing text. The mathematics PBA will focus on applying skills, concepts, and understandings to solve multi-step problems requiring abstract reasoning, precision, perseverance, and strategic use of tools
- **End-of-Year Assessment (EOY)** administered after approx. 90% of the school year. The ELA/literacy EOY will focus on reading comprehension. The mathematics EOY will be comprised of innovative, machine-scorable items

#### Interim Assessment Components:

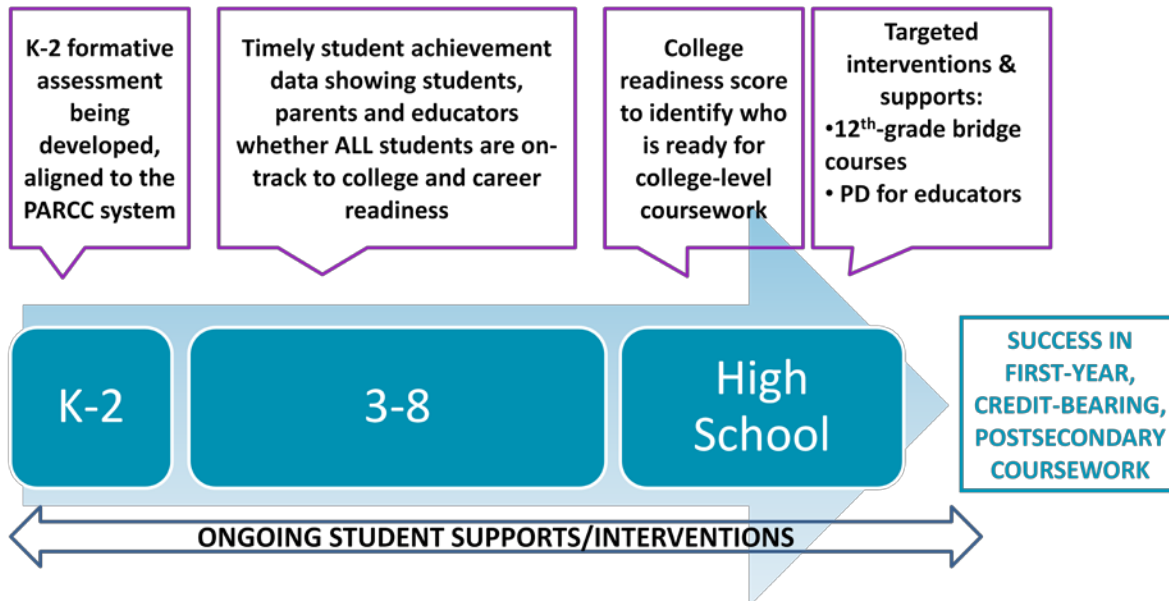
- **Early Assessment** designed to be an indicator of student knowledge and skills so that instruction, supports and professional development can be tailored to meet student needs
- **Mid-Year Assessment** comprised of performance-based items and tasks, with an emphasis on hard-to-measure standards. After study, individual states may consider including as a summative component

## GOAL #1: Create High Quality Assessments



13

## GOAL #2: Build a Pathway to College and Career Readiness for All Students



**PARCC's assessment will be computer-based and leverage technology in a range of ways:**

- **Item Development**
  - Develop innovative tasks that engage students in the assessment process
- **Administration**
  - Reduce paperwork, increase security, reduce shipping/receiving & storage
  - Increase access to and provision of accommodations for SWDs and ELLs
- **Scoring**
  - Make scoring more efficient by combining human and automated approaches
- **Reporting**
  - Produce *timely* reports of students' performance throughout the year to inform instruction, interventions, and professional development

PARCC assessments will be purposefully designed to generate valid, reliable and timely data, including measures of *growth*, for various accountability uses including:

- School and district effectiveness
- Educator effectiveness
- Student placement into college, credit-bearing courses
- Comparisons with other state and international benchmarks
- PARCC assessments will be designed for other accountability uses as states deem appropriate