

System not available until 10-1-08

I - Submission of Textbook Catalog to ISBE

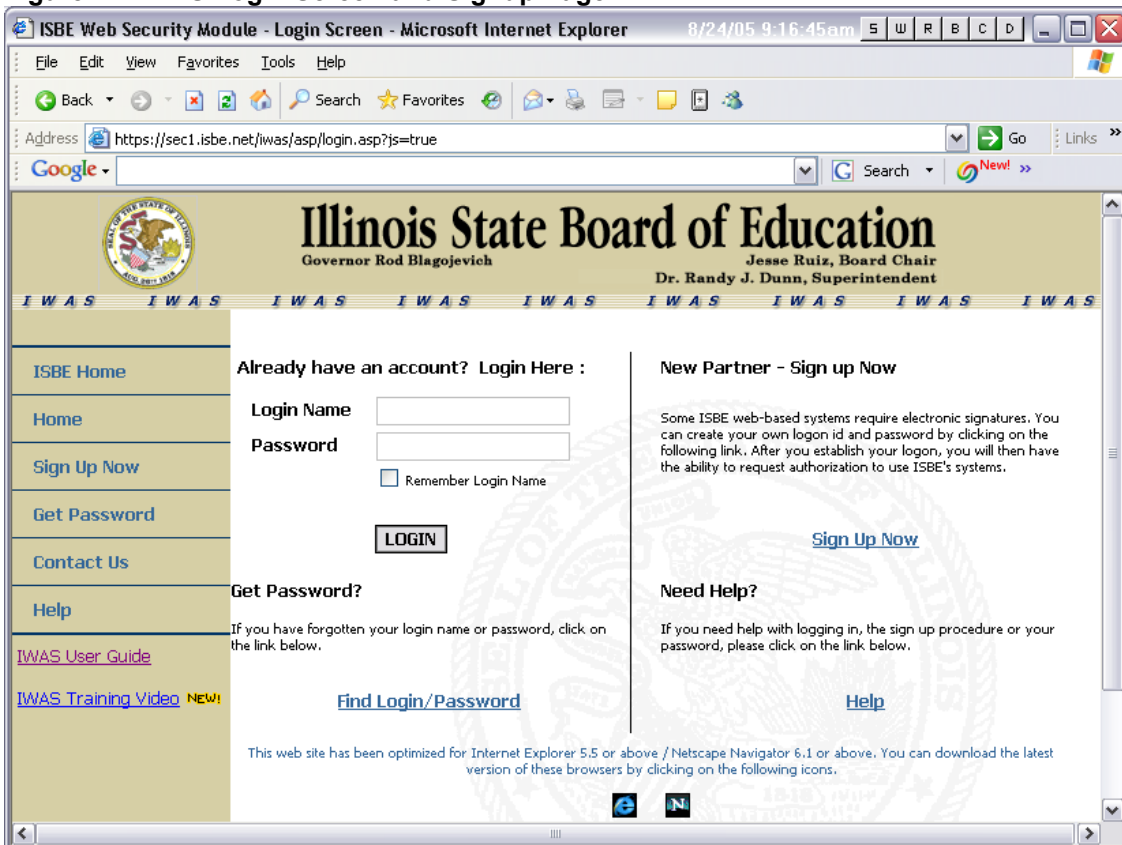
Textbook Catalog Load is an online web-based application designed to simplify the submission of school materials process. To access the system, go to ISBE Home page (<http://www.isbe.net>), and click on IWAS on the top menu.

A first time user must establish an account in IWAS by clicking on [Sign Up Now](#) on the IWAS login screen, enter required information, click on button (see Figure 1 and 2), and follow the instructions.

If you already have an IWAS account, type in your Login Name and Password, and click the button (see Figure 1). Once logged in successfully, select [System Listing](#) on the left menu and [Textbook Catalog Load](#). If you don't see the link to the system, you may not have access to the system. To request access, click on the icon and follow the instructions (See Figure 3 and 4).

More detailed information could be found on IWAS User Guide (click on [IWAS User Guide](#) on the left menu). If you need technical assistance or have questions on how to create a new account and signup for the Textbook Catalog Load system, please contact ISBE Help Desk at 217/558-3600.

Figure 1 – IWAS Login Screen and Signup Page



System not available until 10-1-08

Figure 2 – Create New Login Name and Password for a New User Account

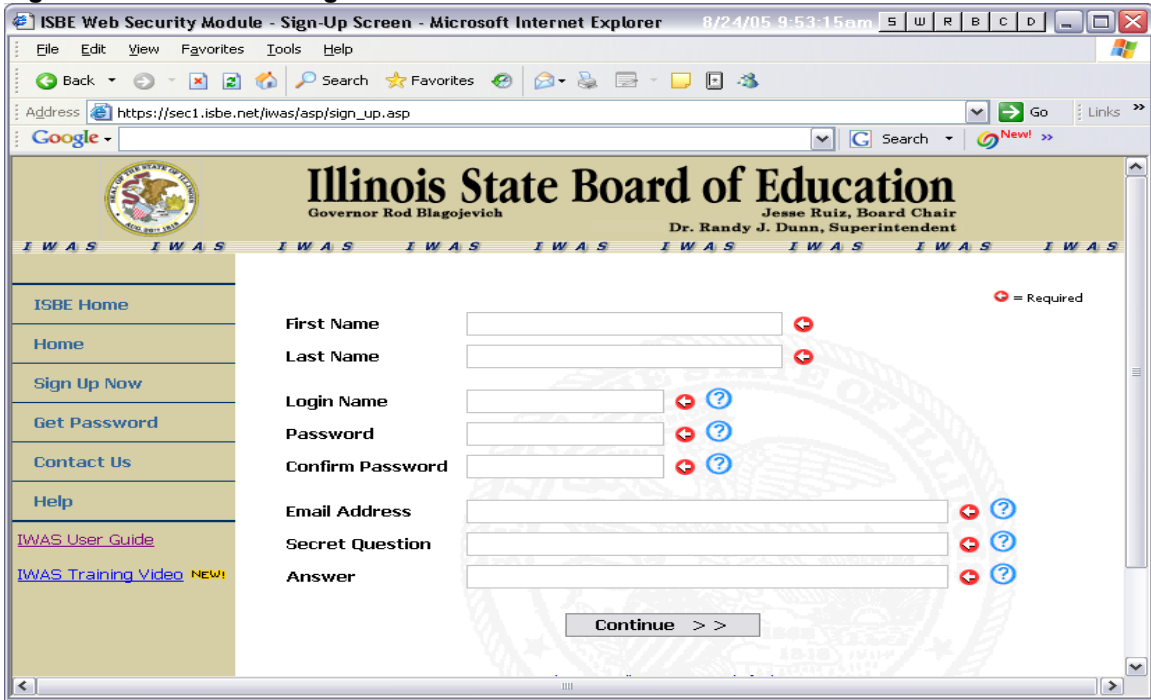
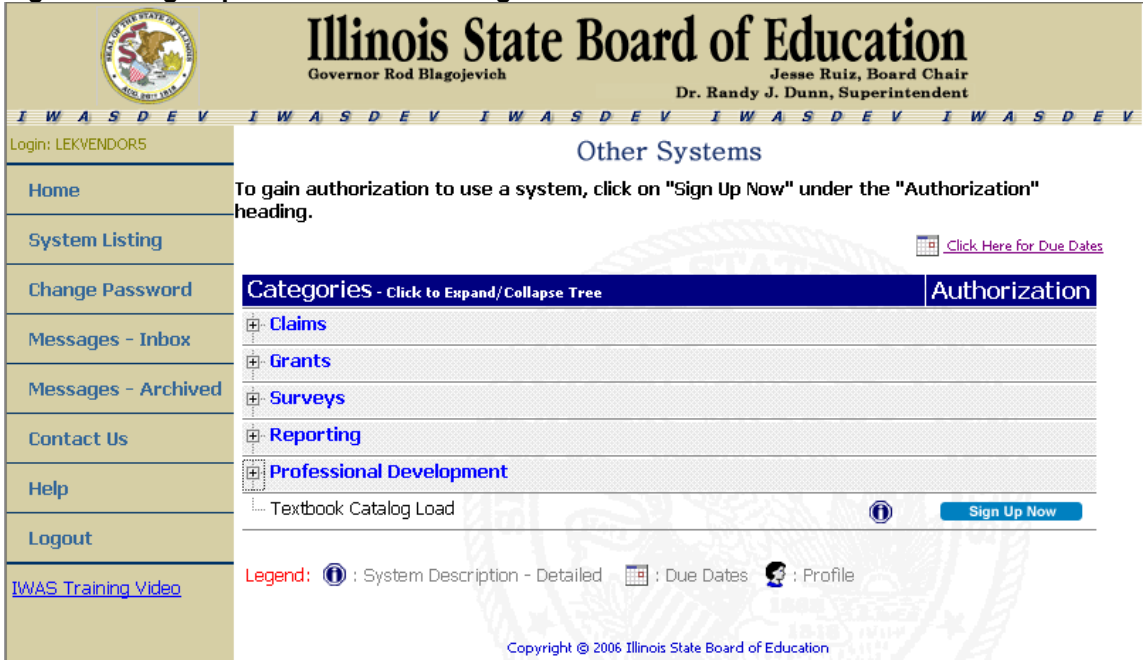


Figure 3 – Sign Up for Textbook Catalog Load



To request access to the Textbook Catalog Load, enter all of the required fields on the signup page (see figure 4 below.). Three-digit assigned Publisher Number is required. If you don't know your assigned number, please refer to the vendor information link on the ITLP homepage, <http://www.isbe.net/htmls/textbook.htm>.

System not available until 10-1-08

Click on **Submit** button after you've completed the information. You will get a confirmation that you're done with the signup process. Your profile will be reviewed by an ISBE administrator and you will be notified via email when your access to the system has been granted.

Figure 4 – Textbook Catalog Load Sign-Up Information Page

+ = Required

First Name	<input type="text" value="Yourfirstname"/>	+
Middle Name	<input type="text" value="Yourmiddlename"/>	
Last Name	<input type="text" value="Yourlastname"/>	+
Entity Name	<input type="text" value="Your company name on file"/>	+
Address 1	<input type="text" value="111 Textbook St"/>	+
Address 2	<input type="text"/>	
City	<input type="text" value="New York City"/>	+
State	<input type="text" value="NY"/>	+
Zip	<input type="text" value="99999"/> - <input type="text" value="9999"/>	+
Phone	<input type="text" value="123"/> - <input type="text" value="456"/> - <input type="text" value="7890"/> ext. <input type="text" value="00000"/>	+
Fax	<input type="text"/> - <input type="text"/> - <input type="text"/> ext. <input type="text"/>	
Email	<input type="text" value="email@myemail.net"/>	+
Broadcast Email	<input type="text" value="YES -- Send system messages to the above email address"/>	?
Email Type	<input type="text" value="HTML"/>	?

My System-Specific Information (For the Textbook Catalog Load System)

Publisher Number	<input type="text" value="001"/>	+
-------------------------	----------------------------------	---

My Access Level (For the Textbook Catalog Load System)

Please enter the justification for access to the system. If you are already approved you can view your access level below. If you want to change your access level after you have been approved please contact your entity administrator.

Access Level	NONE ?
Justification (max 1000 characters)	<input type="text" value="Enter the system and submit school materials catalog"/>
Status	PENDING ISBE ADMIN APPROVAL
Admin Contact	LEK ZIGGY -- 111-111-1111

System not available until 10-1-08

After you log into IWAS successfully and your access to the system is granted, click on [System Listing](#) and you should see the link to the system (see Figure 5). Clicking on [Textbook Catalog Load](#) will automatically take you to the catalog load main page (Figure 6).

Figure 5 – System Listing Screen

My Systems

Below are systems that you are either authorized to use or are awaiting authorization from either your district (Pending-District), ROE (Pending-ROE) or ISBE (Pending-ISBE). Once you are "Authorized" to access a system, simply click on the system description to use it.

[Click Here for Due Dates](#)

Categories - Click to Expand/Collapse Tree

Authorization

Textbook Catalog Load

Authorized

Legend: : System Description - Detailed : Due Dates : Profile

[Want to Signup for Other Systems?](#)

Copyright © 2006 Illinois State Board of Education

Figure 6 – Textbook Catalog Load Main Page

Illinois State Board of Education

Textbook Catalog Load

Publisher: Vendor 1 - 034

A [Semicolon \(;\) delimited file](#) or [Tab delimited file](#) (with .txt extension) is allowed. For more information on how to create a data file and how to solve problems with data errors, [click here](#). To load a text file, select your field delimiter below:

Semicolon (;)

TAB

Click on [Browse] button to find, or type in the location of the file you want to load data.

On the main screen, select the field delimiter of the file (default is the semicolon (;) delimiter) and then browse or type the location of the file. When you click on button, your data will be validated and saved in database. After the data is stored, a message will state that the loading has been completed (see Figure 7) and you should get a confirmation email shortly. You may logout of the system. No further information is required.

If errors are found while loading the data, review and make corrections to the data and try again. Note that you can load data as many times as you wish, but only the most recent loaded data will be kept on file.

You can view and save the XML data for your future reference by clicking on the [View or download the XML data](#) and click on File, and Save As to save the XML file.

System not available until 10-1-08

Figure 7 – Message shows data has been loaded successfully

The screenshot displays the 'Textbook Catalog Load' interface for the Illinois State Board of Education. At the top, there is a navigation bar with the board's logo and name on the left, and links for 'HELP', 'ISBE HOME', and 'LOGOFF' on the right. Below this is a header section with the title 'Textbook Catalog Load'. A sub-header indicates the publisher: 'Publisher: Vendor 1 - 034'. The main content area contains instructions for loading data, stating that a semicolon (;) delimited file or a tab delimited file (with .txt extension) is allowed. It provides a link for more information on creating data files and solving errors. Two radio buttons are present: 'Semicolon (;)' (which is selected) and 'TAB'. Below the radio buttons is a text input field for the file location, followed by a 'Browse...' button. A 'Load Data' button is positioned below the input field. A large, faint watermark of the Illinois State Seal is visible in the background. At the bottom of the main content area, a red message states: 'Loading complete!! A confirmation email was sent to your email address on file.' Below this message are two buttons: 'View/Download XML Data' and 'Original File Name: U:\Data\034_test_semicolon.txt'. The final line of text indicates 'Number of Items Loaded: 5'.

HELP | ISBE HOME | LOGOFF

Illinois State Board of Education

Textbook Catalog Load

Publisher: Vendor 1 - 034

A [Semicolon \(;\) delimited file](#) or [Tab delimited file](#) (with .txt extension) is allowed. For more information on how to create a data file and how to solve problems with data errors, [click here](#). To load a text file, select your field delimiter below:

Semicolon (;)
 TAB

Click on [Browse] button to find, or type in the location of the file you want to load data.

Loading complete!! A confirmation email was sent to your email address on file.

Original File Name: U:\Data\034_test_semicolon.txt
Number of Items Loaded: 5

System not available until 10-1-08

II – Data Requirements

<u>Field Name</u>	<u>Length</u>	<u>Description</u>	<u>Sample of data</u>
pubnbr	3	Publisher Number	096
isbn	13	ISBN	0002244124015
ttl	150	Title of the Item	Windcatcher
itm	4	Number of Items (per set or each, etc.)	0200
cyr	4	Copyright Year	2008
grd	5	Grade Level (See valid codes below)	5-8
sbj	3	Subject (See valid codes and description below)	010
tm	2	Type of Material (See valid codes and description below)	12
cond	2	Condition of the Item (See valid codes and description below)	01
price	8	Price	13.21
desc_	400	Item Description	Eleven-year-old Tony Souza is not looking forward to spending even part of the summer at his grandmother's house on the Connecticut shore.

You must make sure that all fields are completed with the data requirements. For example, **pubnbr** is 3 digits long, **isbn** is 13 digits long (last position could be a character), **cyr** is 4-digit year (no earlier than 1910 and no later than 2100) and cannot be blank, and **price** cannot be less than or equal to 0.00, and so on.

Subject Codes (sbj) sorted by description.

```

sbj  Description
-----
480  AGRICULTURE/AGRI-BUSINESS
670  BILINGUAL
520  BUSINESS EDUC-ACCOUNTING
530  BUSINESS EDUC-CLERICAL
560  BUSINESS EDUC-KEYBOARDING
535  BUSINESS EDUC-MARKETING
540  BUSINESS EDUC-MATH
550  BUSINESS EDUC-SHORTHAND
570  BUSINESS EDUCATION
760  CAREER EXPLORATION
581  COMPUTER DATABASE
582  COMPUTER GRAPHICS
583  COMPUTER PROGRAMMING
580  COMPUTER SCIENCE
584  COMPUTER SPREADSHEET
585  COMPUTER WORD PROCESSING
590  CONSUMER EDUCATION
831  ELEMENTARY CURRICULUM K-4

```

System not available until 10-1-08

680 ENGLISH AS SECOND LANGUAG
720 FAMILY & CONSUMER SCIENCE
500 FINE ARTS-ART
510 FINE ARTS-MUSIC
660 FOREIGN LANGUAGE
600 FOREIGN LANGUAGE-FRENCH
610 FOREIGN LANGUAGE-GERMAN
620 FOREIGN LANGUAGE-ITALIAN
621 FOREIGN LANGUAGE-JAPANESE
630 FOREIGN LANGUAGE-LATIN
640 FOREIGN LANGUAGE-RUSSIAN
650 FOREIGN LANGUAGE-SPANISH
832 GRADES 5-8 CURRICULUM
833 GRADES 9-10 CURRICULUM
835 GRADES K-12 CURRICULUM
834 GRADES K-8 CURRICULUM
770 GUIDANCE
700 HEALTH & PHYSICAL DEVELOP
750 HEALTH OCCUPATIONS
490 HORTICULTURE
470 HUMANITIES
780 INDUSTRIAL ED-AUTOMOTIVE
790 INDUSTRIAL ED-CONSTRUCTIO
791 INDUSTRIAL ED-DRAFTING
800 INDUSTRIAL ED-ELECTRICITY
801 INDUSTRIAL ED-GRAPHICS
802 INDUSTRIAL ED-MANUFACTURI
810 INDUSTRIAL ED-METAL/WELD
820 INDUSTRIAL ED-TECHNOLOGY
830 INDUSTRIAL EDUCATION
140 LANGUAGE ARTS
060 LANGUAGE ARTS-COMPOSITION
080 LANGUAGE ARTS-GRAMMAR
100 LANGUAGE ARTS-HANDWRITING
110 LANGUAGE ARTS-JOURNALISM
120 LANGUAGE ARTS-SPEECH
130 LANGUAGE ARTS-SPELLING
190 LITERATURE
150 LITERATURE-AMERICAN
160 LITERATURE-ENGLISH
170 LITERATURE-MODERN
180 LITERATURE-WORLD
270 MATHEMATICS
230 MATHEMATICS-ADVANCED
240 MATHEMATICS-ALGEBRA
250 MATHEMATICS-GEOMETRY
220 MATHEMATICS-SPANISH
260 MATHEMATICS-TRIGONOMETRY
690 PHYSICAL EDUCATION
010 READING
030 READING-BELOW GRADE LEVEL
020 READING-SPANISH
050 READING-SUPPLEMENTAL
380 SCIENCE
291 SCIENCE-ANTHROPOLOGY
300 SCIENCE-BIOLOGICAL

System not available until 10-1-08

310	SCIENCE-CHEMISTRY
320	SCIENCE-EARTH
340	SCIENCE-LIFE
350	SCIENCE-PHYSICAL
360	SCIENCE-PHYSICS
370	SCIENCE-PHYSIOLOGY
371	SCIENCE-PSYCHOLOGY
372	SCIENCE-SOCIOLOGY
290	SCIENCE-SPANISH
465	SOCIAL STUDIES
430	SOCIAL STUDIES-AMERICAN
400	SOCIAL STUDIES-BEHAVIOR
410	SOCIAL STUDIES-ECONOMIC
420	SOCIAL STUDIES-GEOGRAPHY
460	SOCIAL STUDIES-LAW
450	SOCIAL STUDIES-WORLD
280	STATISTICS & PROBABILITY
515	THEATRE & DRAMA
730	TRAFFIC SAFETY EDUCATION
000	UNKNOWN

Material Codes (tm)

tm Description

tm	Description
01	Textbook Hardcover
02	Textbook Softcover
03	Package or Set of Books
04	Software Package
05	Online Student Instruction
06	Multimedia Kit
07	Manipulatives
08	VHS
09	VCR/CD
10	DVD
11	Audio Cassette
12	Audio CD-Rom
13	Special Accommodations
14	Other
15	Poster
16	Paperback

System not available until 10-1-08

Grade Levels (grd)

K	1-4	2-9	4-6	6-7	8-12
K-1	1-5	2-10	4-7	6-8	9
K-2	1-6	2-11	4-8	6-9	9-10
K-3	1-7	2-12	4-9	6-10	9-11
K-4	1-8	3	4-10	6-11	9-12
K-5	1-9	3-4	4-11	6-12	10
K-6	1-10	3-5	4-12	7	10-11
K-7	1-11	3-6	5	7-8	10-12
K-8	1-12	3-7	5-6	7-9	11
K-9	2	3-8	5-7	7-10	11-12
K-10	2-3	3-9	5-8	7-11	12
K-11	2-4	3-10	5-9	7-12	
K-12	2-5	3-11	5-10	8	
1	2-6	3-12	5-11	8-9	
1-2	2-7	4	5-12	8-10	
1-3	2-8	4-5	6	8-11	

Condition Code (cond)

cond Description

01	New
02	Used-Like New
03	Used-Good
04	Reconditioned

System not available until 10-1-08

III - Data Preparation

Two simple types of data files that could be used for the submission are:

- A. Text (Semicolon Delimited) with .txt extension
- B. Text (Tab Delimited) with .txt extension

To correctly create a text file, we recommend you use the Notepad application (that comes with the Microsoft Windows software) or any text editor. Do not create the text file using Microsoft Word, Excel, or other applications without producing the ASCII/plain text file format. If you are planning to use Microsoft Excel 2003 or later, you may follow the instructions in this section.

It is important that you must prepare data as specified in the data requirements; and, you have reviewed the following checklist. Failure to follow the list could result in errors (See samples of errors in IV – How to determine data errors).

Checklist: The text file must have:

- A .txt extension;
- A row of 11 headers/field names on the first row (See field names in Section II - Data Requirement);
- Each field must be separated by a semicolon (;) or a tab;
- 10 semicolons/tabs per row;
- No extra blank rows or spaces after the last row of data; and
- No unusual characters such as □ when opening the text file with Notepad.

A: Semicolon delimited

Sample of data:

```
pubnbr;isbn;ttl;itm;cy;grd;sbj;tm;cond;price;desc_
001;0845447475001;GAMES COLLECTION 6 EA;0036;2006;K-4;010;03;01;134.95;sample description
001;084544748312X;CRAFTS COLLECTION;0006;2006;K-4;010;03;02;22.80;item description here
```

Microsoft Excel 2003 or later

- Type or import your data into a spreadsheet. Note that before typing in or importing the data, column A to I should be formatted as text in order to display number data as it is typed in and not losing leading zeros, and such. The desc_ (column K) should remain in General format as defaulted.
- Type field names as specified in the data requirements (pubnbr, isbn, ttl, itm, cy, grd, sbj, tm, cond, price, and desc_) in the first row of the spreadsheet.
- Do not include any formatting enhancements to the spreadsheet. In other words, no bold, italic, fancy bullets, special fonts, indented text, merged cells and the like as they could be transformed to forbidden characters, which are not allowed in the loading process, or creating hidden tabs.
- **Using the Tab delimited option:**

Select File/Save As

Change "Save as type" to Text (Tab delimited) *.txt

Save the file using File/Save (or Ctrl+S)

Close Excel (File/Close)

Open the saved file in Notepad (For Windows, click on Start/All Programs/Accessories/Notepad)

Select (by highlighting) a tab (see below) and copy it using Edit/Copy (or Ctrl+C)



System not available until 10-1-08

Select Edit/Replace
For "Find What" paste the tab using Edit/Paste (or Ctrl+V)
For "Replace With" type in a ; (Note this is just one semicolon, nothing more)
Click "Replace All" button
Save the file using File/Save (or Ctrl+S)

- **Using the comma separated value (CSV) option:**

Select File/Save As
Change "Save as type" to CSV (comma delimited) *.csv
Save the file using File/Save (or Ctrl+S)
If prompted that the selected file type does not support workbooks that contain multiple sheets, click OK
Then if prompted that file may contain features that are not compatible with CSV (comma delimited) Do you want to keep the workbook in this format?, click Yes
Select File/Close
When prompted to save changes, click No
Open file in Notepad (For Windows, click on Start/All Programs/Accessories/Notepad)
Select Edit/Replace
For "Find What" enter ,
(Note this is just one comma, nothing more)
For "Replace With" type in a ;
(Note this is just one semicolon, nothing more)
Click "Replace All" button
Save the file using File/Save (or Ctrl+S) with a .txt extension instead of a .csv extension

Note: If you decide to prepare data using the CSV option and the content of a field, such as title (ttl) or description (desc_), contains a comma (,), you may get an extra column. This will trigger an error (similar to the sample #4 in Section IV – How to determine data errors), while loading. A row must contain no more than 10 semicolons.

B: Tab delimited file

Sample of data:

pubnbr	isbn	ttl	itm	cyr	grd	sbj	tm	cond	price	desc_		
034	9780007149681	Goodbye Mog	1	2002	K-3	190	01	01	16.73	"Mog the cat thought she		
034	9780007207930	Goose in a Hole	1	2006	K-3	140	01	01	12.79	"when the water in the v		
034	9780027116908	Freckle Juice	1	1971	K-3	190	01	01	14.36	"More than anything in t		
034	9780027136708	caddie woodlawn	1	1973	3-6	190	01	01	16.69	"caddie woodlawn, which		

You may follow the instructions as described in the semicolon delimited option but no semicolon replacement.

System not available until 10-1-08

IV – How to determine data errors

When the system encounters an error, a message will be displayed on the screen or on a dialog pop-up window. Please note the error, carefully review the data, correct the error, and resubmit the data. Samples of errors and possible solutions are as follows.

1. Wrong file type, or invalid file name/location of the file:

The data must be prepared as a semicolon or a tab delimited with .txt extension.

Make sure the field delimiter used in your file has been chosen.

Browse or type in a correct filename and location.

A Semicolon (;) delimited file or Tab delimited file (with .txt extension) is allowed. For more information on how to create a data file and how to solve problems with data errors, [click here](#). To load a text file, select your field delimiter below:

Semicolon (;)
 TAB

Click on [Browse] button to find, or type in the location of the file you want to load data.

**Data Loading Canceled! - File does not exist or invalid data file!
Please select a Semicolon or TAB delimited .txt file.
See above for samples of data.**

2. Incorrect publisher number:

This error indicates that you are trying to load data that may contain an invalid publisher number. Be sure that the data in the 1st column/field matches your 3-digit publisher number appearing on top of the screen (Example: 034 as shown below).

A Semicolon (;) delimited file or Tab delimited file (with .txt extension) is allowed. For more information on how to create a data file and how to solve problems with data errors, [click here](#). To load a text file, select your field delimiter below:

Semicolon (;)
 TAB

Click on [Browse] button to find, or type in the location of the file you want to load data.

Data row number 4 - Data Loading Canceled! - Incorrect publisher number, 044

If you keep getting this error and the data contains your 3-digit publisher number, you may be trying to submit a hidden blank publisher number. Open the text file using Notepad and see if there are any extra blank rows after the last row of data. If you could move the cursor far below the last row of data, you need to delete all of those blank spaces/rows.

Tips: If you prepare/correct data in Excel, to remove columns, highlight a few columns after the desc_ (or K column) by holding Shift key and mouse clicking on the a few column headers (Example: L, M, N), right mouse click, and choose Delete. To remove rows, highlight a few rows after the last row of data and delete the rows in the same manner. Save data and try again.

After deleting the extra columns and rows, if you still get this error, your data (especially, in the ttl or desc_ column) may have a tab (␣ shown when open it in Notepad) embedded in the content. Normally, we won't be able to see the tab (␣) in a cell of an Excel spreadsheet. But, you will be able to when you open the text file in Notepad. You need to spot check data in these two

System not available until 10-1-08

columns in Notepad and delete them. A better way to correct the problem; if you prepared the tab delimited data in Excel, follow the instructions below.

Step 1: Stretch the column (ttl or desc_) far enough that all of its content should be on one line.

Step 2: Carefully spot check each row. If it appears on multiple lines or unwrapped in a cell, you may want to check this ISBN in Notepad. (Open your text file in Notepad, select Edit, and find the ISBN. Once it is located, you would see a ¶ in that column.)

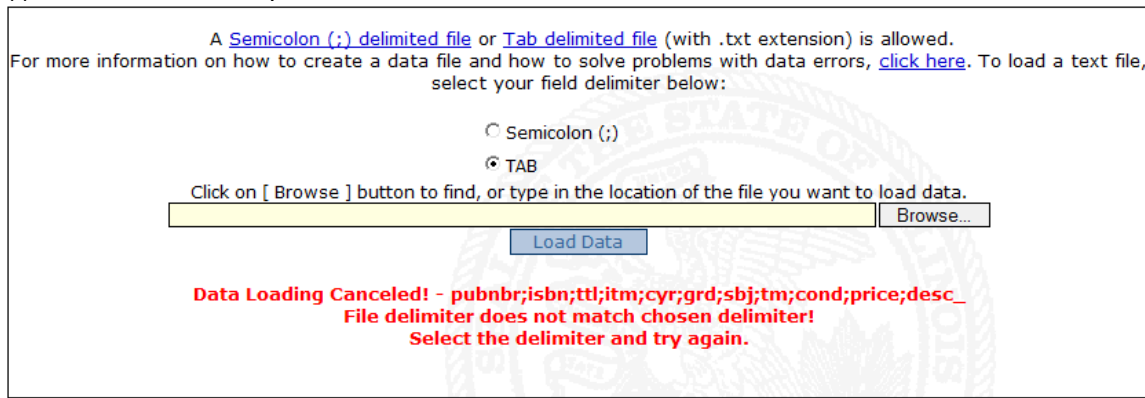
Step 3: In Excel, delete spaces between each line until it appears in the same line.

Step 4: Repeat Step 1 to Step 3 until you no longer see the problem as described in Step 2.

Save data and try again.

3. File delimiter does not match the chosen delimiter:

Check the data and choose the delimiter used in your file. In this example, choosing semicolon (;) delimiter will fix the problem.



A Semicolon (;) delimited file or Tab delimited file (with .txt extension) is allowed. For more information on how to create a data file and how to solve problems with data errors, [click here](#). To load a text file, select your field delimiter below:

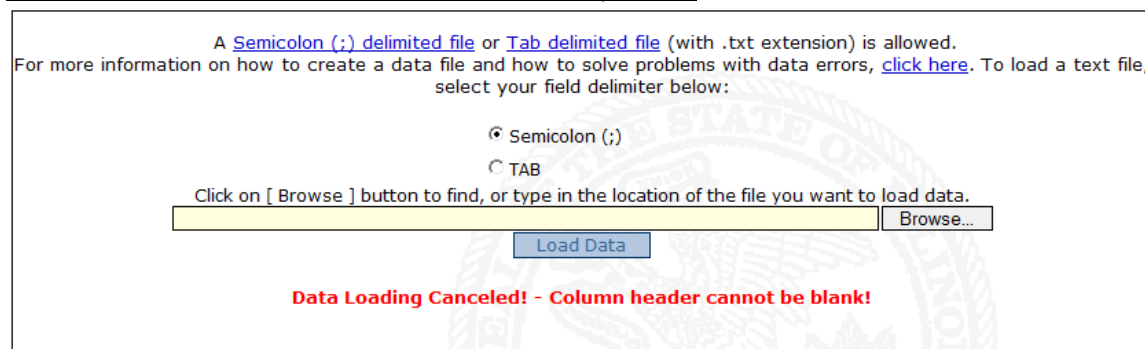
Semicolon (;)
 TAB

Click on [Browse] button to find, or type in the location of the file you want to load data.

**Data Loading Canceled! - pubnbr;isbn;ttl;itm;cyr;grd;sbj;tm;cond;price;desc_
File delimiter does not match chosen delimiter!
Select the delimiter and try again.**

4. Column header cannot be blank / A row contains extra columns/fields:

The error message in this example indicates that your data may have an additional blank column in the Excel spreadsheet. When your data was saved as a text file, the file would have extra semicolons or tabs on each row of data. To fix the problem, open the file in Notepad and check if there is no label on a header column or there are extra semicolons or tabs after the desc_ field. Data must have no more than 10 semicolons/tabs per row.



A Semicolon (;) delimited file or Tab delimited file (with .txt extension) is allowed. For more information on how to create a data file and how to solve problems with data errors, [click here](#). To load a text file, select your field delimiter below:

Semicolon (;)
 TAB

Click on [Browse] button to find, or type in the location of the file you want to load data.

Data Loading Canceled! - Column header cannot be blank!

The sample below indicates data row #1 has more than 11 fields/columns. Remove the extras on the specified row and try again.

System not available until 10-1-08

A [Semicolon \(;\) delimited file](#) or [Tab delimited file](#) (with .txt extension) is allowed. For more information on how to create a data file and how to solve problems with data errors, [click here](#). To load a text file, select your field delimiter below:

- Semicolon (;)
 TAB

Click on [Browse] button to find, or type in the location of the file you want to load data.

Data Loading Canceled! - Data row number 3 contains too many fields.

Tips: If you prepare/correct data in Excel, to remove columns, highlight a few columns after the desc_ (or K column) by holding Shift key and mouse clicking on the headers (Example: L, M, N), right mouse click, and choose Delate. To remove rows, highlight a few rows after the last row of data and delete the rows in the same manner.

5. Material, Subject, or Grade Code error:

The errors below show invalid codes according to the data specifications. Check each item on the list and the code marked with an x. See Section II – Data Requirements for guidelines. Fix the errors and resubmit the data.

A [Semicolon \(;\) delimited file](#) or [Tab delimited file](#) (with .txt extension) is allowed. For more information on how to create a data file and how to solve problems with data errors, [click here](#). To load a text file, select your field delimiter below:

Semicolon (;)
 TAB

Click on [Browse] button to find, or type in the location of the file you want to load data.

ISBN	Material	tm Error	Subject	sbj Error	Grade	grd Error	Condition	cond Error
9780026408684	05		667	X	6-8		07	X
9780026412711	08		656	X	6		02	

Loading Cancel!! - Data errors found!! Please fix the data and try again.

6. Duplicate ISBN Number is not allowed:

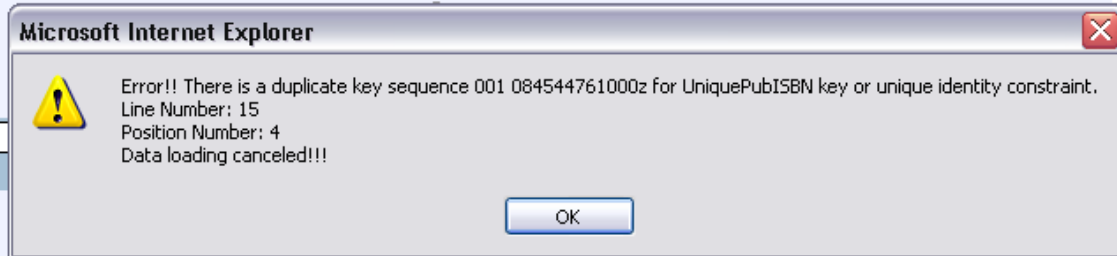
The error indicates there is a duplicate ISBN in the file. You cannot load the same item more than once. Search for the identified ISBN on the error message. Edit or delete the duplicate and resubmit the data.

System not available until 10-1-08

Textbook Catalog Load

A [Semicolon \(;\) delimited file](#) or [Tab delimited file](#) (with .txt extension) is allowed. For more information on how to create a data file and how to solve problems with data errors, [click here](#).

To load a text file, select your field delimiter below:



Data loading canceled!!!

Please review the line number and position number of the XML provided below to determine the location of the error.

[View or download the XML data](#)

You may view the provided XML and search for the duplicate ISBN. Line number and position number will tell you where the error is in the XML file format.

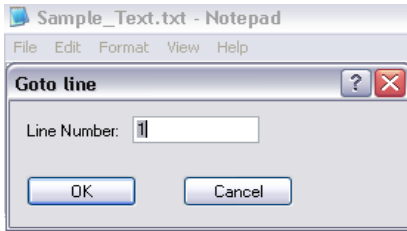
System not available until 10-1-08

```
<?xml version="1.0" standalone="yes" ?>
- <Textbooks>
- <Textbook>
  <pubnbr>034</pubnbr>
  <isbn>9780026353670</isbn>
  <ttl>Glencoe Literature Grade 6 Student Edition</ttl>
  <itm>1</itm>
  <cyr>2000</cyr>
  <grd>6</grd>
  <sbj>190</sbj>
  <tm>01</tm>
  <cond>01</cond>
  <price>69.99</price>
  <desc_>Textbook Hardcover</desc_>
</Textbook>
- <Textbook>
  <pubnbr>034</pubnbr>
  <isbn>9780026408684</isbn>
  <ttl>Invitation to Languages Student Edition (Hardbound)</ttl>
  <itm>1</itm>
  <cyr>1998</cyr>
  <grd>6-8</grd>
  <sbj>660</sbj>
  <tm>01</tm>
  <cond>03</cond>
  <price>37.50</price>
  <desc_>Textbook Hardcover</desc_>
</Textbook>
- <Textbook>
  <pubnbr>034</pubnbr>
  <isbn>9780026408721</isbn>
  <ttl>Invitation to Languages Audio Program with Tape Manual Audiocassette</ttl>
  <itm>1</itm>
  <cyr>1998</cyr>
  <grd>6-8</grd>
  <sbj>660</sbj>
  <tm>11</tm>
  <cond>01</cond>
  <price>252.48</price>
  <desc_>Audio Cassette</desc_>
</Textbook>
- <Textbook>
  <pubnbr>034</pubnbr>
  <isbn>9780026412711</isbn>
  <ttl>Invitation to Languages Video Program with Script VHS</ttl>
  <itm>1</itm>
  <cyr>1998</cyr>
```

Tips:

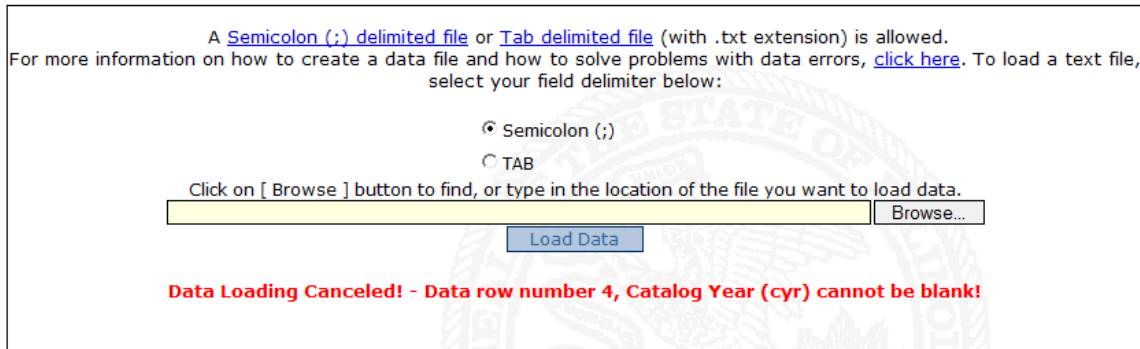
If you have a relatively small file and the XML file is available for you to view or download on the screen, you may be able to save the file on your PC. To find the source of the error, open the XML file in Notepad; using Edit and Go To... Type in the Line Number indicated in the error message and click OK.

System not available until 10-1-08



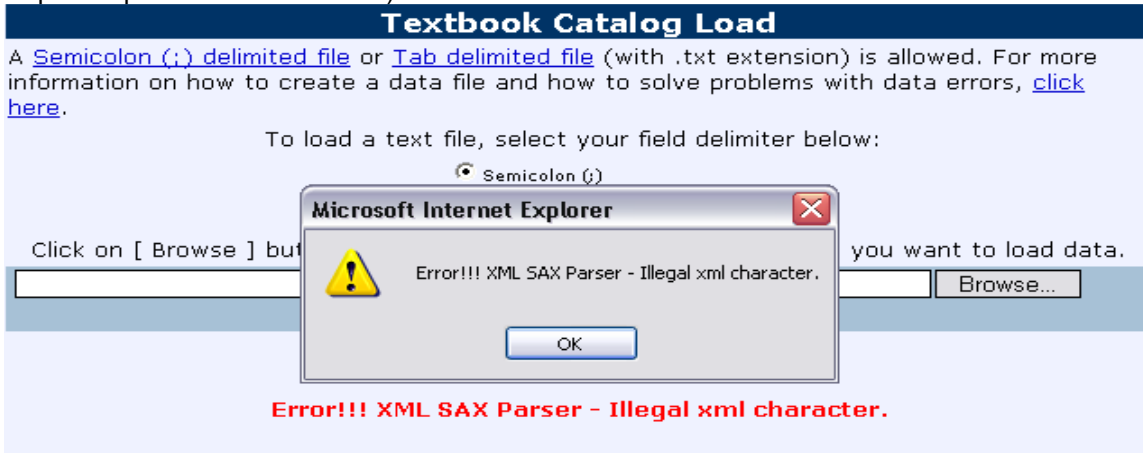
7. Invalid data according to the data specifications

The error below indicates that data row#1, <cyr>, is blank and is invalid. (Check Section II – Data Requirements for more information.) Open the text file in Notepad and locate cyr field on row#1 (Line Number 2), supply a valid 4-digit catalog year, and resubmit data.



8. Unrecognized characters:

The error indicates that the data may contain character(s) that the system does not accept at this time. Open your file with Notepad application. Notice if there are any □ or unusual characters in the text file, or in the XML file. Delete all of them, if found, (using Notepad Edit and Replace option is recommended) and resubmit the data.



Those are a few samples of data errors that you may encounter while loading the data. If you continue to experience difficulties in loading the data and need technical assistance, please contact ISBE Help Desk at 217/558-3600.